

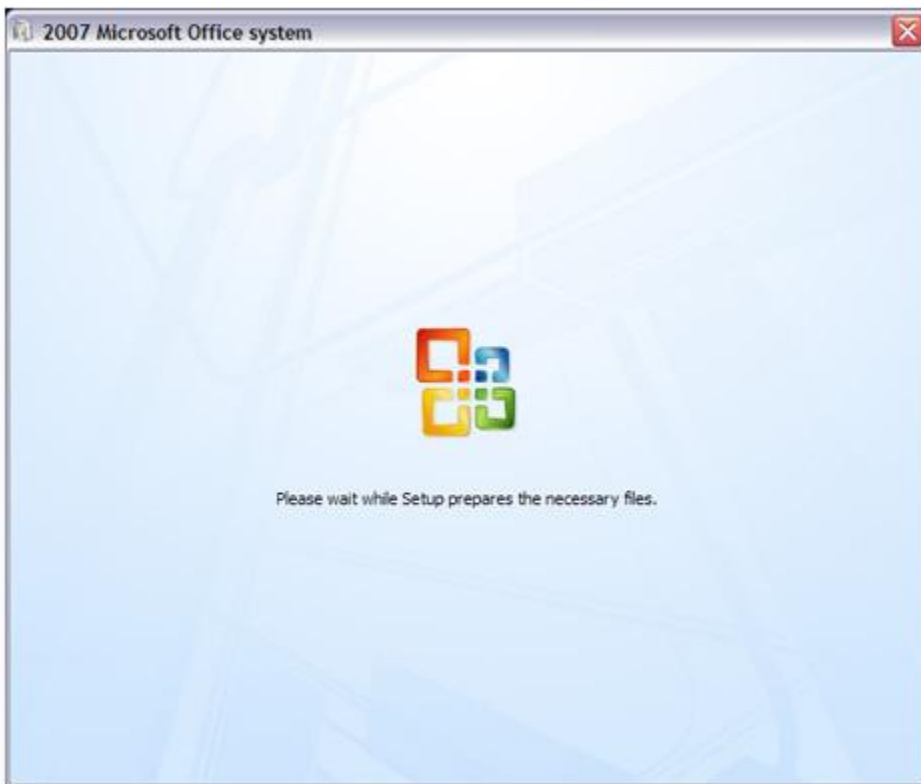
# Microsoft Office Enterprise 2007 – Installation Screen Shots

## Introduction

Microsoft Office Enterprise 2007 is distributed as one DVD. The Product Keys are located on the back of the DVD sleeve. Make sure to store the Product Key in a safe place, as you cannot complete the installation without it.

## Instructions

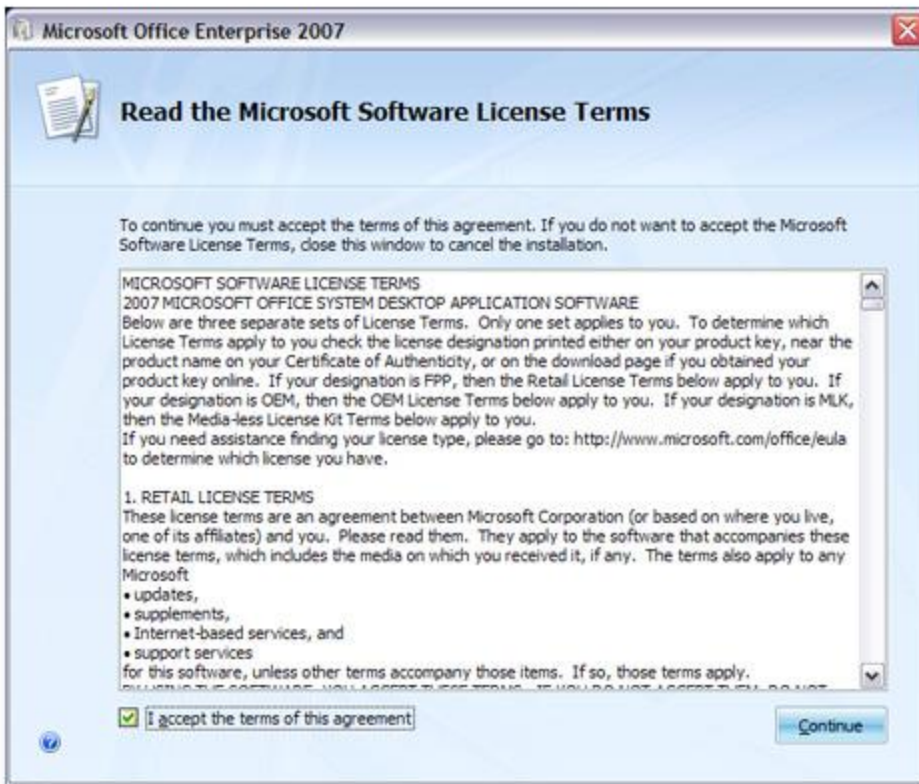
Insert the Office Enterprise 2007 installation DVD into your computer's CD/DVD-ROM drive. After a few moments, the setup program will startup and begin loading necessary files for installation. If the setup program does not automatically start, open My Computer and double click on the CD/DVD-ROM drive icon to run the program.



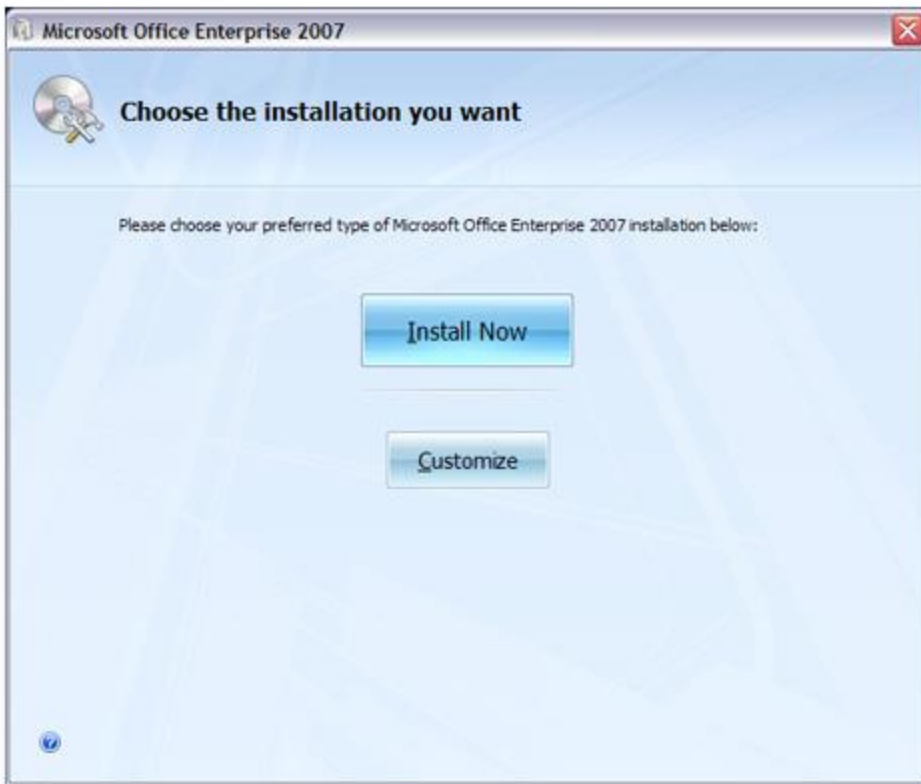
At the beginning of the installation, you will be prompted to enter the product key. The product key printed on a yellow sticker, located on the back of the sleeve that the DVD came in. When you've finished, click the "Continue" button.



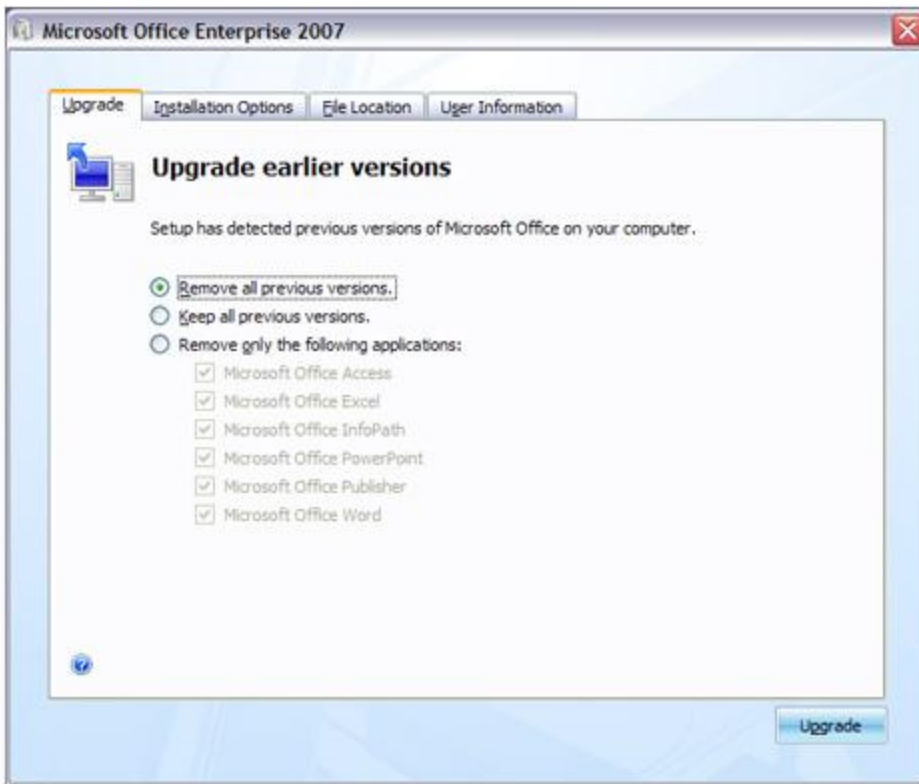
You will now be presented with the *Microsoft Software License Terms*. Please take a moment to scroll through and review this **End User License Agreement (EULA)**. After you are finished reviewing the EULA and if you agree to the terms, click on the “I accept the license terms” checkbox and then click the “Continue” button to continue.



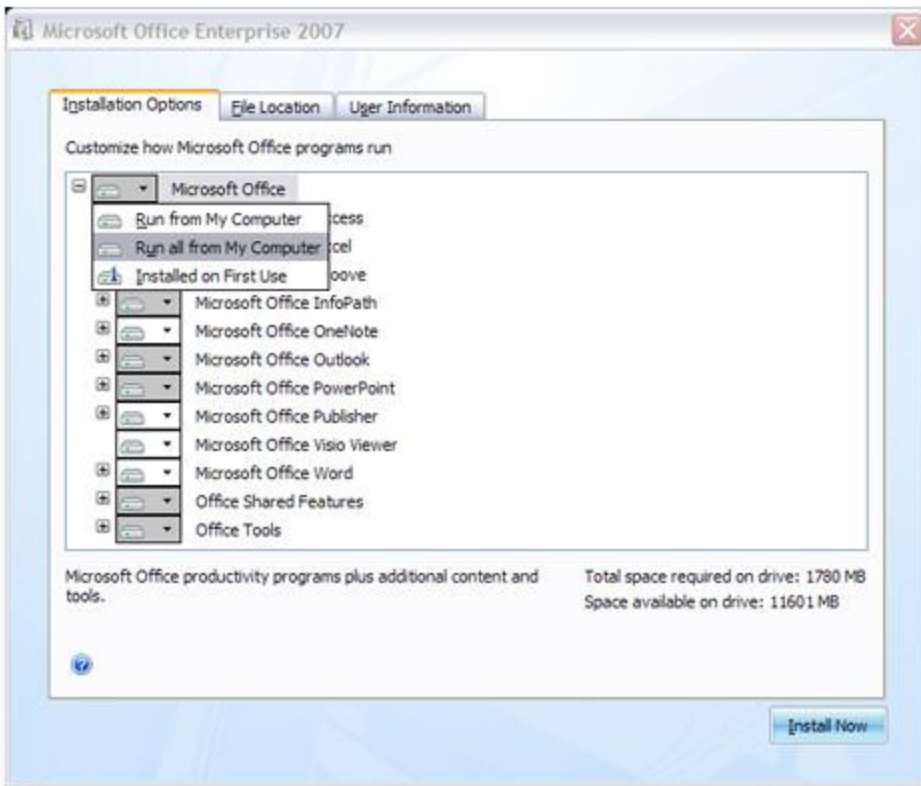
You will now have the option of choosing the type of installation to perform. The "Install Now" option installs the most frequently used items on your computer, but if you access a feature that wasn't installed, you may be prompted for your installation DVD to install the extra feature. To do a complete installation, it's best to click the "Customize" button.



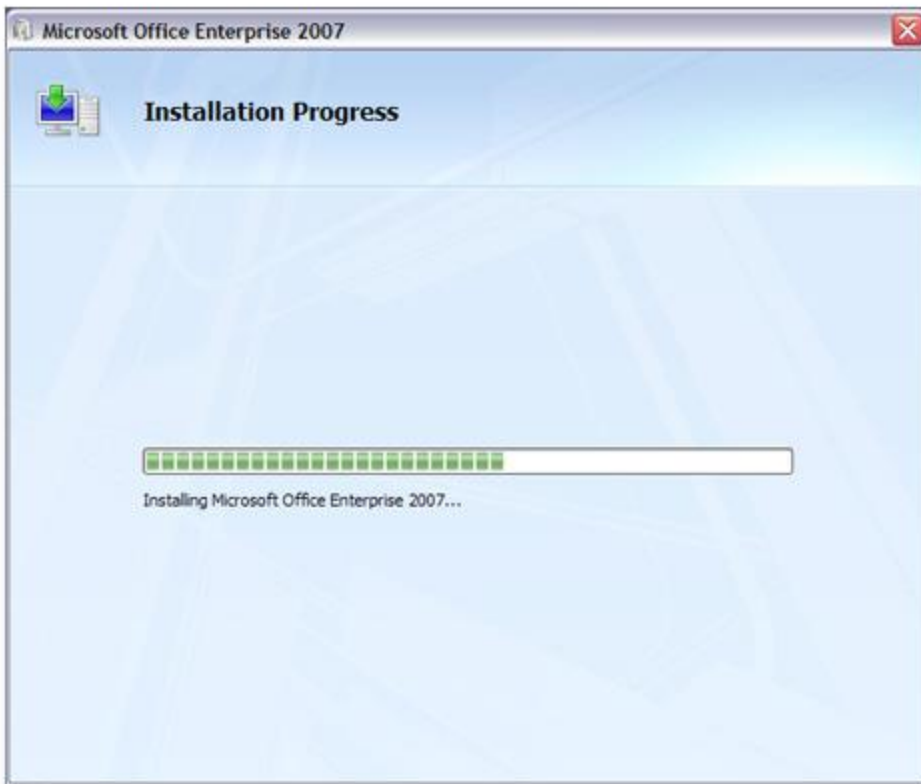
In this next dialog, if the setup program detects that you have another version of office installed, you will be prompted to decide if you completely remove the older version, keep them, or remove specific ones. You typically will want to remove the previous versions, but the choice is up to you. When you have made your choice, click the "Installation Options" tab.



In this next dialog, you will tell the setup program to install all features from the DVD. Under the Installation Options tab, click on the Microsoft Office node and select "Run all from my Computer." All installable features will change from gray to white, indicating that all features will be installed to your computer. Now, click the "Install Now" button.



The setup program will begin installing the office suite on your computer. This may take a while.



The installation is now complete. Click the "Close" button to end the setup program.



Microsoft Office Enterprise 2007



Microsoft Office Enterprise 2007 has been successfully installed.

Visit Microsoft Office Online to get free product updates, help, and online services.

Go to Office Online

Close

