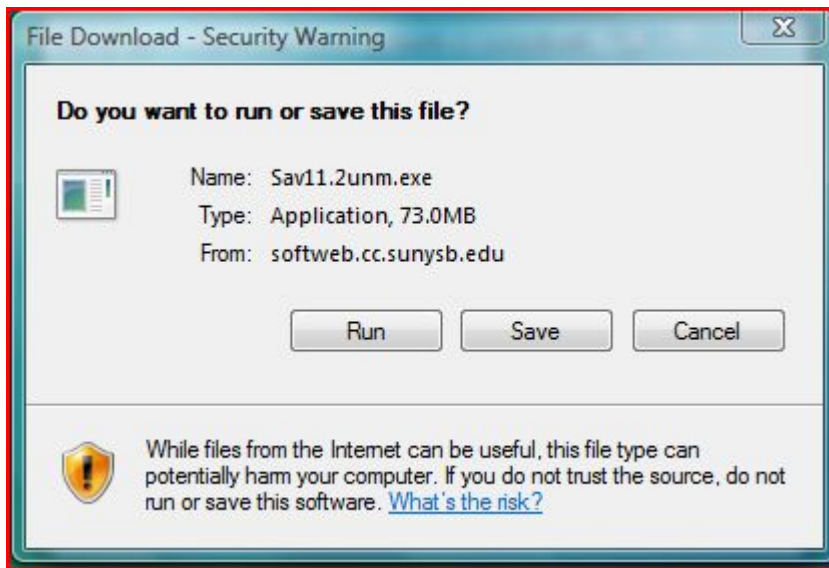


Symantec Endpoint Protection 11 Installation Instructions (Managed)

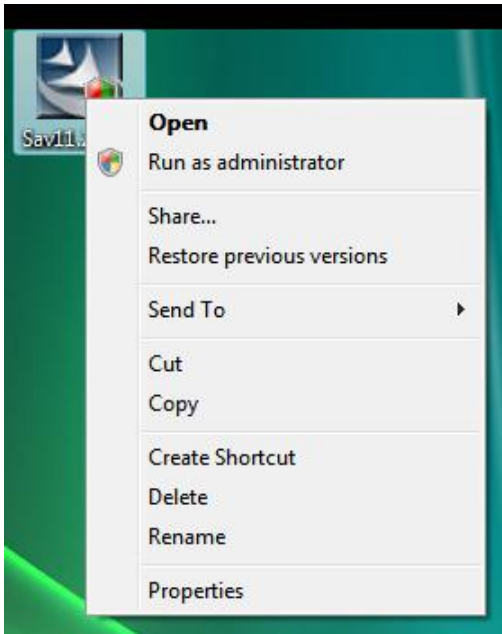
Note: This install is for on-Campus, Faculty & Staff users. You must have Windows XP SP2 or Windows Vista to install Symantec 11.

Note: Those with Windows 2003/2008 Server who want to install the managed version should choose the appropriate file from Softweb and run the install. The directions will be the same except that only Antivirus/Antispyware definitions will be installed. Proactive scan is not supported on Server operating systems.

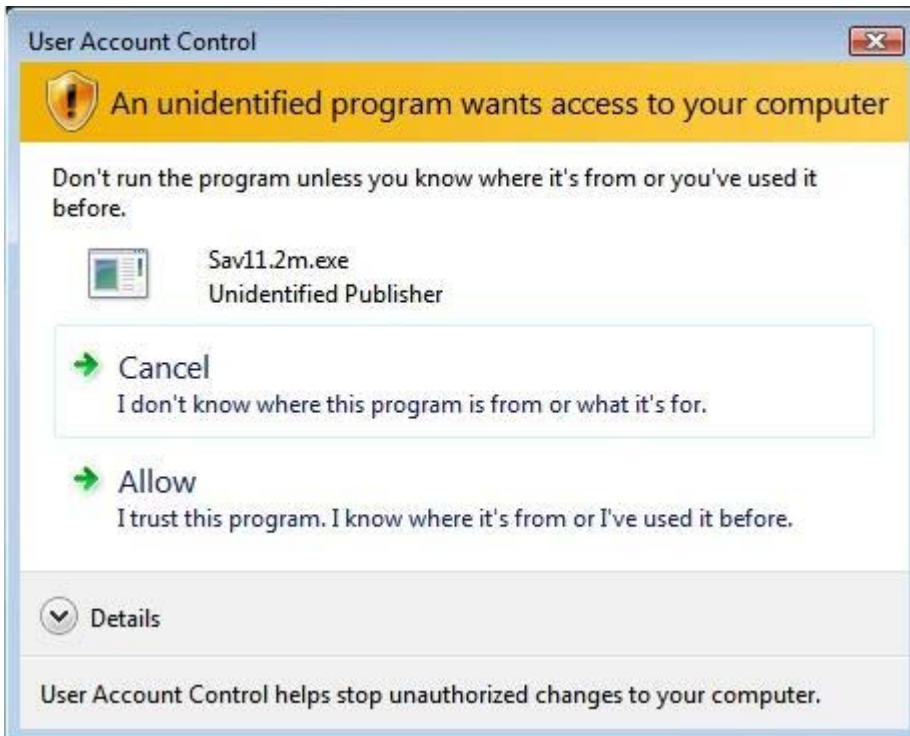
- 1) Save the file Sav11.2m.exe to your hard drive (preferably the Desktop folder). If this is a 64 Bit install, the file will be Sav11.2m64.exe.



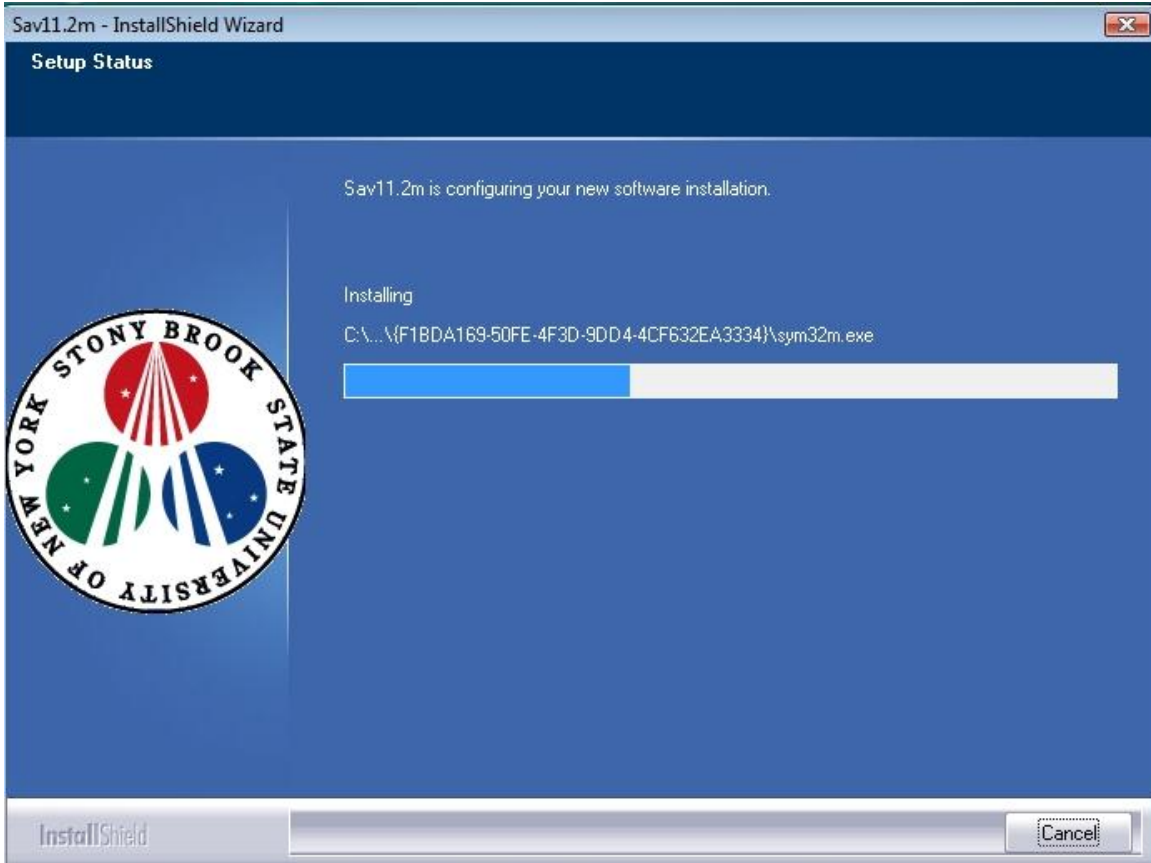
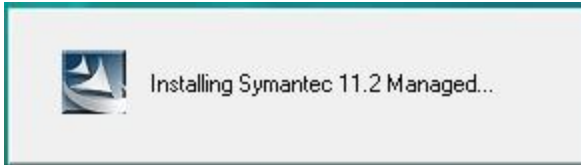
- 2) Close any open programs. Go to the desktop (or folder you saved the file to) and double click Sav11.2m.exe. If this is Windows Vista, right click the file and select "Run as Administrator." If you receive an Open File – Security Warning box, click Run. The installation needs to be run as a user with Administrative rights.



On Windows Vista you may see the following message. This will happen if User Account Control is enabled. You should click “Allow” so that the installation can proceed.



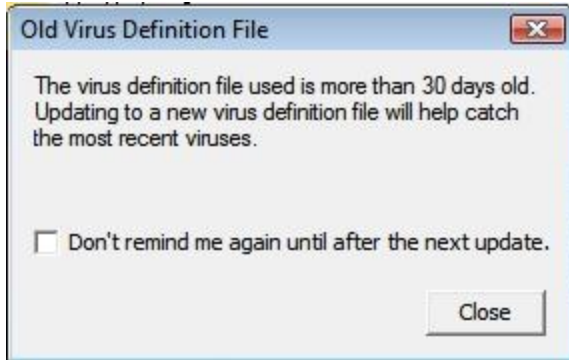
3) Setup will begin. You will see the following screens and there will be no user interaction required for the next few minutes.



4) A screen will appear telling you that Symantec is running LiveUpdate. The client will automatically contact Symantec's servers to obtain the latest antivirus/antispyware and proactive scan definitions. This may take several minutes. LiveUpdate will automatically close when it is done.

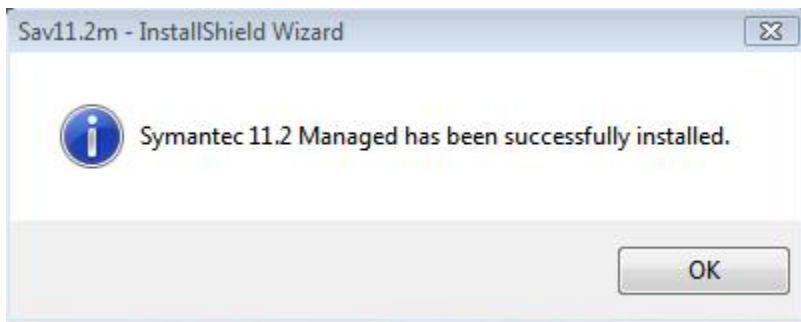


5) A message may appear indicating an old virus definition file. You should click close on this message, as the virus definitions will update by the end of the installation.



6) After the LiveUpdate finishes, you should get a message that the installation has been completed. You should watch the Symantec icon in the lower left of your machine. The yellow dot should disappear as the Symantec services are started. You will see a green dot to show that the Symantec client is being managed by the server. At this point installation will be complete.

Note: If you are doing an upgrade from a previous Symantec version, there may be a delay of a few minutes after the LiveUpdate for the installation to complete. The Symantec 11 install is removing the incompatible definitions files from the old Symantec version.



7) You can double click the Symantec shield once the yellow dot is gone. It should display the latest virus definitions for antivirus/antispyware and proactive scan. You can find what version of the Symantec client you have by clicking "Help and Support" on the top right of the Symantec 11 panel and then clicking "About..."



8) Definitions will be updated automatically everyday when the clients check-in with the server. There should be no need for you to run LiveUpdate manually. However if you wish you can click the LiveUpdate button on the left side of this panel to update the client to the latest definitions. Antivirus/Antispyware definitions are usually updated daily by Symantec, while Proactive scan definitions schedule is a bit more erratic.

This completes the Symantec Endpoint Protection 11 Managed installation guide.